

DESCRIPTION

AMC MODEL SW-218-5 IS A REFLECTIVE SP5T BAND-SWITCH MODULE WITHOUT DRIVER CIRCUITRY.

SPECIFICATIONS

FREQUENCY

J6-J1	0.01-2	GHz	MINIMUM
J6-J2	2-4	GHz	MINIMUM
J6-J3	4-8	GHz	MINIMUM
J6-J4	8-12.4	GHz	MINIMUM
J6-J5	12.4-18	GHz	MINIMUM

INSERTION LOSS

J6-J1	1.7	dB	MAXIMUM
J6-J2	2.0	dB	MAXIMUM
J6-J3	2.3	dB	MAXIMUM
J6-J4	2.8	dB	MAXIMUM
J6-J5	3.5	dB	MAXIMUM

ISOLATION

J6-J1	45	dB	MINIMUM
J6-J2	45	dB	MINIMUM
J6-J3	40	dB	MINIMUM
J6-J4	35	dB	MINIMUM
J6-J5	30	dB	MINIMUM

VSWR (ON)

J6-J1	1.35:1	MAXIMUM
J6-J2	1.8:1	MAXIMUM
J6-J3	2.0:1	MAXIMUM
J6-J4	2.2:1	MAXIMUM
J6-J5	2.5:1	MAXIMUM

RF POWER RATINGS

RF POWER RATINGS	+27 dBm CW	MAXIMUM
------------------	------------	---------

SWITCHING TIME

RISE (10% RF TO 90% RF)	300 ns	MAXIMUM
FALL (90% RF TO 10% RF)	300 ns	MAXIMUM
ON (50% TTL TO 90% RF)	500 ns	MAXIMUM
OFF (50% TTL TO 10% RF)	500 ns	MAXIMUM

CONTROLS

CURRENT CONTROLLED
5 INDIVIDUAL CONTROLS
+20 mA = ISOLATION
-20 mA = INSERTION LOSS
(SEE TRUTH TABLE)

CONNECTORS

RF INPUT/OUTPUT SMA (FEMALE)
CONTROL SOLDER PIN

SIZE

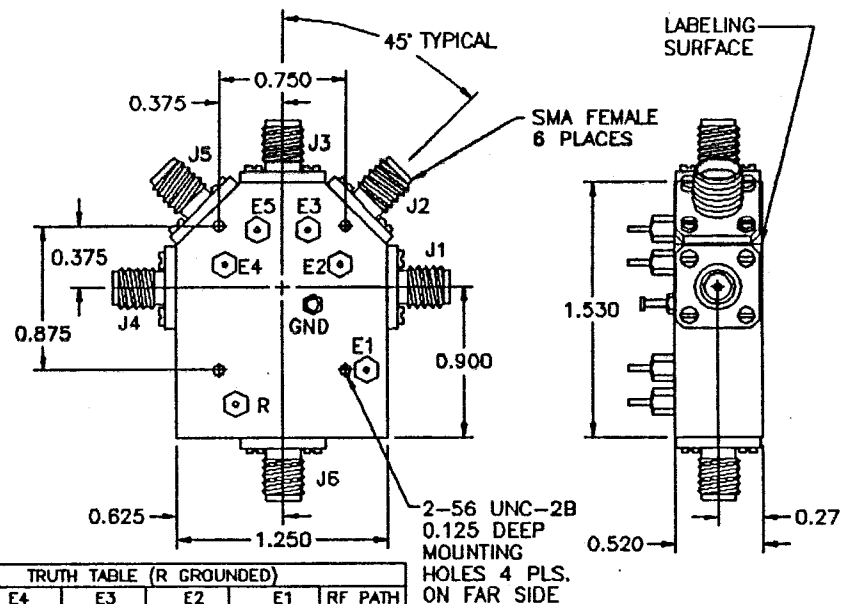
1.25" x 1.53" x 0.52"

AVAILABLE OPTIONS

A13	J6 SMA MALE, J1-J5 SMA FEMALE
A14	J6 SMA FEMALE, J1-J5 SMA MALE
A15	60 dB ISOLATION (CONSULT FACTORY)

REVISIONS				
ZONE	REV.	DESCRIPTION	DATE	APPROVED
	A	ORIGINAL RELEASE	11/22/92	<i>[Signature]</i>

MECHANICAL OUTLINE




TRUTH TABLE (R GROUNDED)					
E5	E4	E3	E2	E1	RF PATH
+20mA	+20mA	+20mA	+20mA	-20mA	J6-J1
+20mA	+20mA	+20mA	-20mA	+20mA	J6-J2
+20mA	+20mA	-20mA	+20mA	+20mA	J6-J3
+20mA	-20mA	+20mA	+20mA	+20mA	J6-J4
-20mA	+20mA	+20mA	+20mA	+20mA	J6-J5

NOTES:

- 1) DIMENSIONS ARE IN INCHES
- 2) TOLERANCES: X.XX ±0.020
X.XXX ±0.010
- 3) WEIGHT: APPROX. 3.0 OZ

ENVIRONMENTAL RATINGS

- TEMPERATURE -55°C TO +95°C (OPERATING)
-65°C TO +125°C (STORAGE)
- HUMIDITY MIL-STD-202F, METHOD 103B COND. B
- SHOCK MIL-STD-202F, METHOD 213B COND. B
- VIBRATION MIL-STD-202F, METHOD 204D COND. B
- ALTITUDE MIL-STD-202F, METHOD 105C COND. B
- TEMPERATURE CYCLE MIL-STD-202F, METHOD 107D COND. A

		AMERICAN MICROWAVE CORPORATION 7311G GROVE RD., FREDERICK, MD. 21701 TEL: (301) 662-4700 FAX: (301) 662-4938	
		PRODUCT FEATURE SW-218-5 0.01-18 GHz, REFLECTIVE SP5T BAND-SWITCH MODULE	
APPROVALS DATE DRAWN CHECKED	11/22/92 11/22/92	SIZE A	SHEET 1 OF 2